

# A Tale of Two Teams

Working together is hard, let's go ~~program~~ automate!



Eng

**Load  
Balancer**

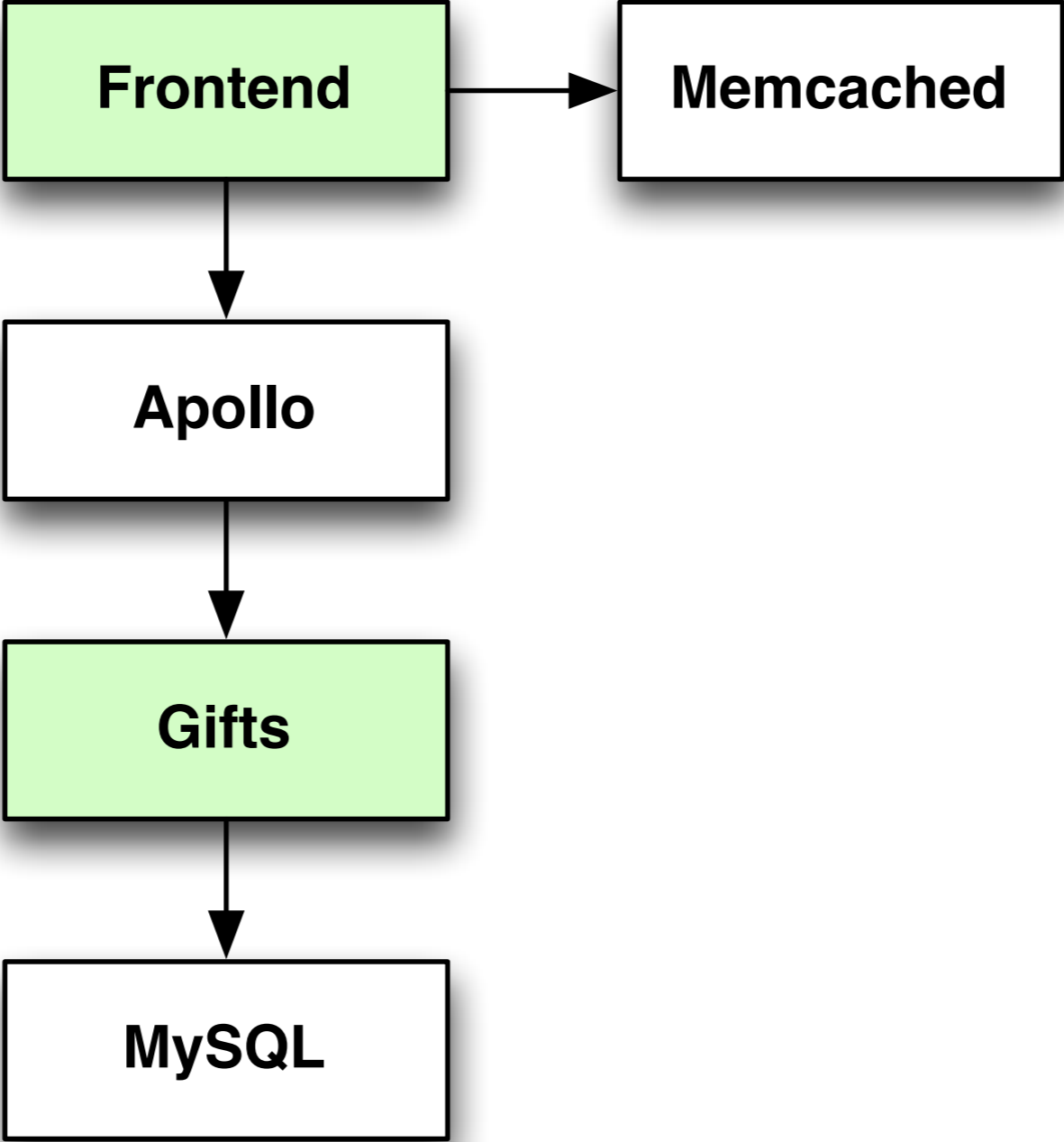
**Frontend**

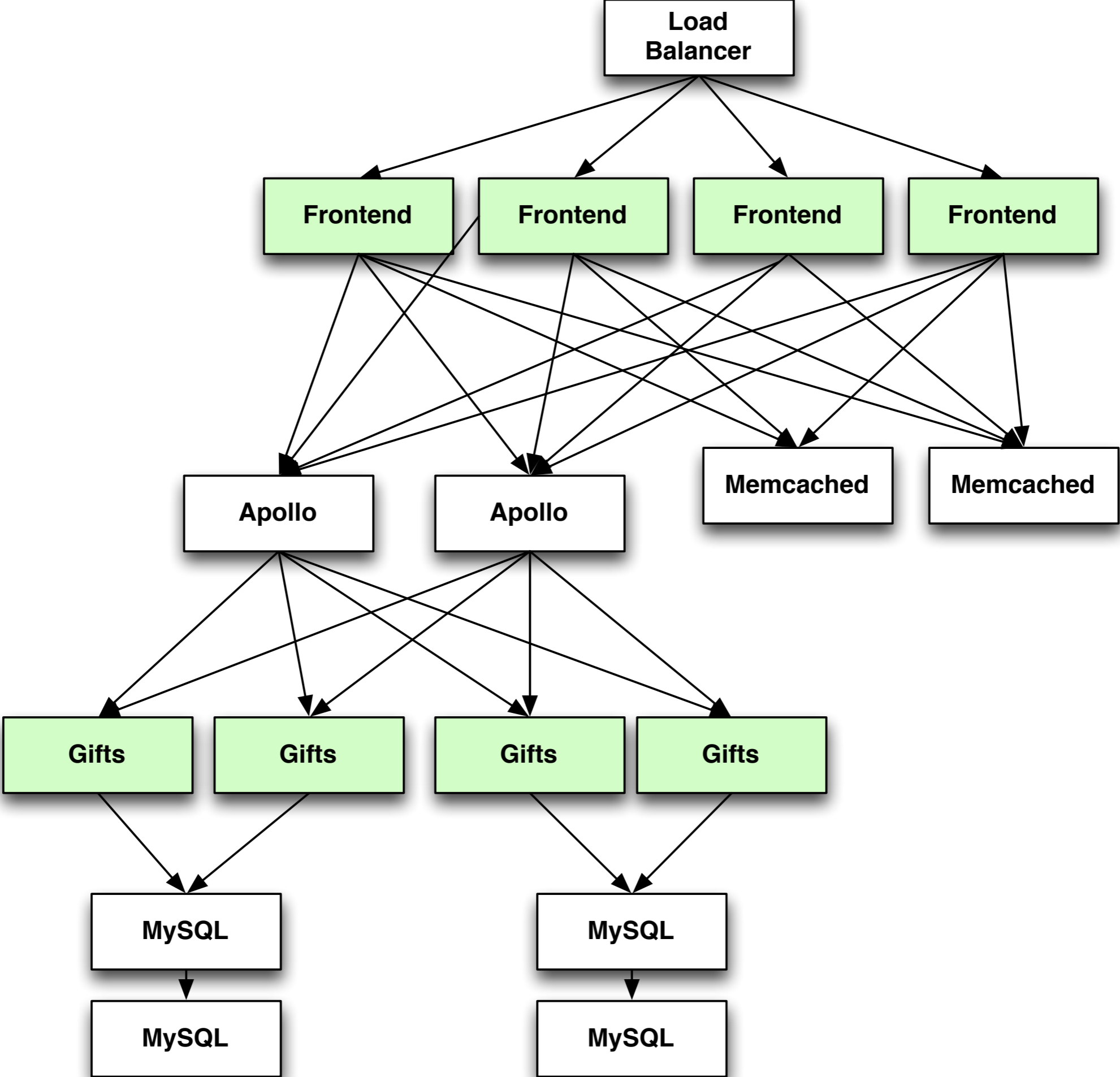
**Memcached**

**Apollo**

**Gifts**

**MySQL**





**Load  
Balancer**

**Frontend**

**Memcached**

**Gifts**

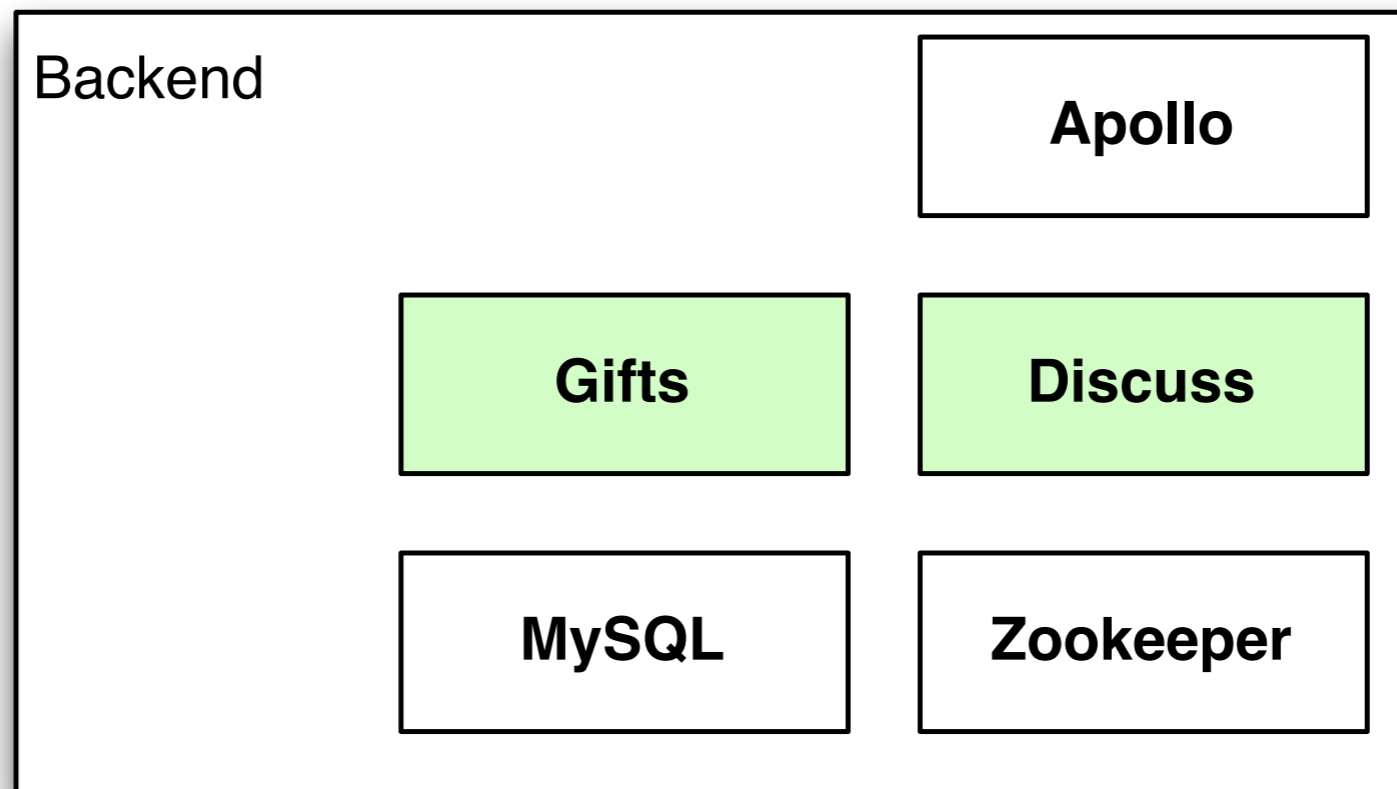
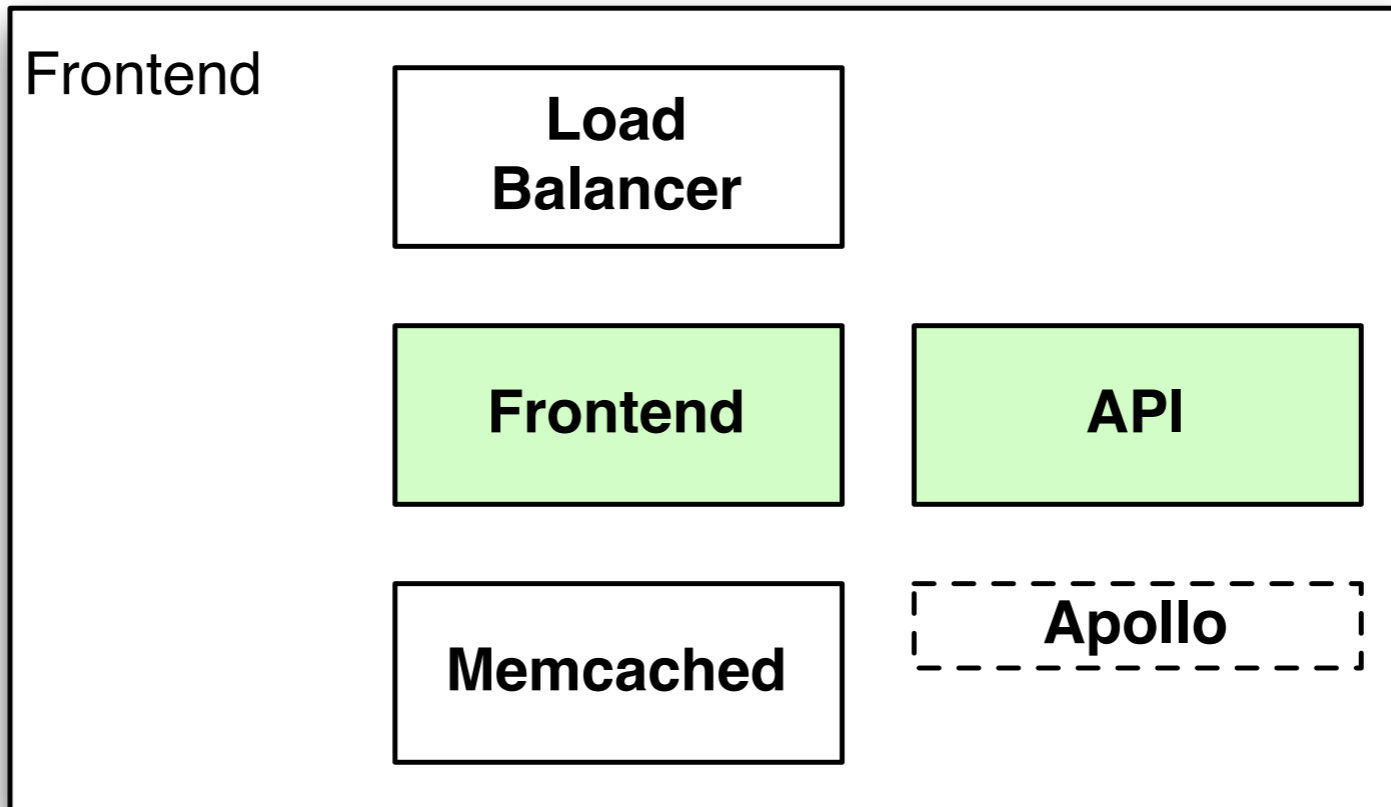
**MySQL**

**API**

**Apollo**

**Discuss**

**Zookeeper**



**Now It's More Complicated**



~Arbitrary Language, Platform, Libraries

Fast Deployment, Fast Rollback

Complete Packages

Uniform Deployment Mechanism

Low Touch/No Touch

# Deployment



`<type>-<version>-<arch>.tar.gz`

`/bin/control start`

`/bin/control stop`

`/bin/control status`

## Example Bundles:

Mac: <http://bit.ly/osx-bundle>

Linux-x86\_64: <http://bit.ly/linux-bundle>

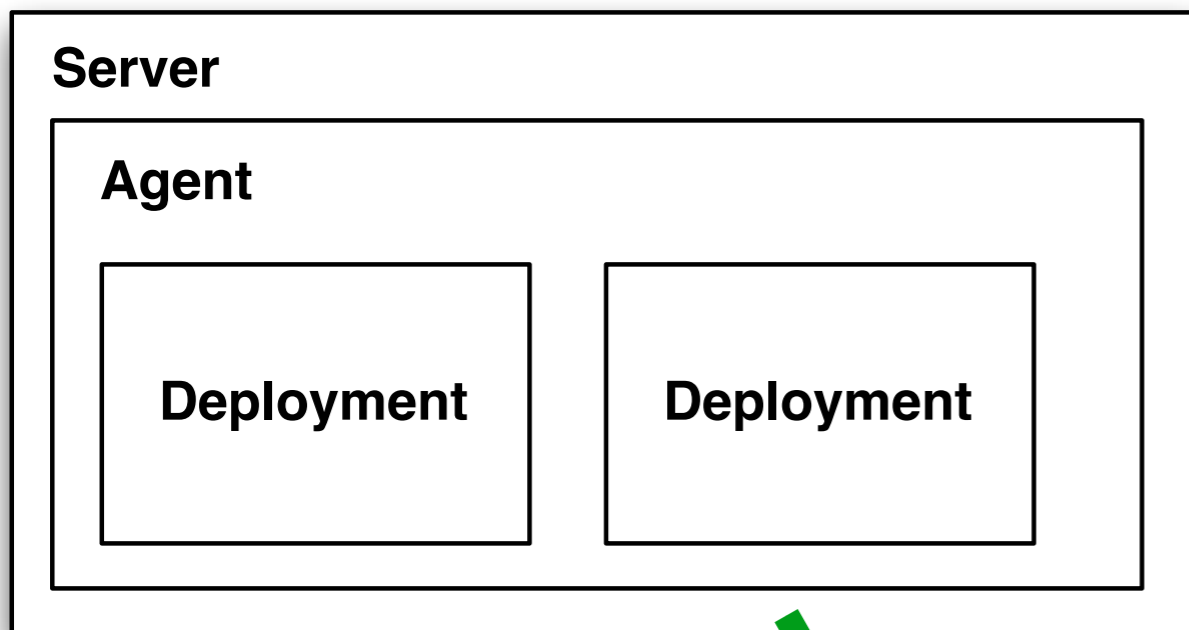
**Agent**

**Deployment**

**Deployment**

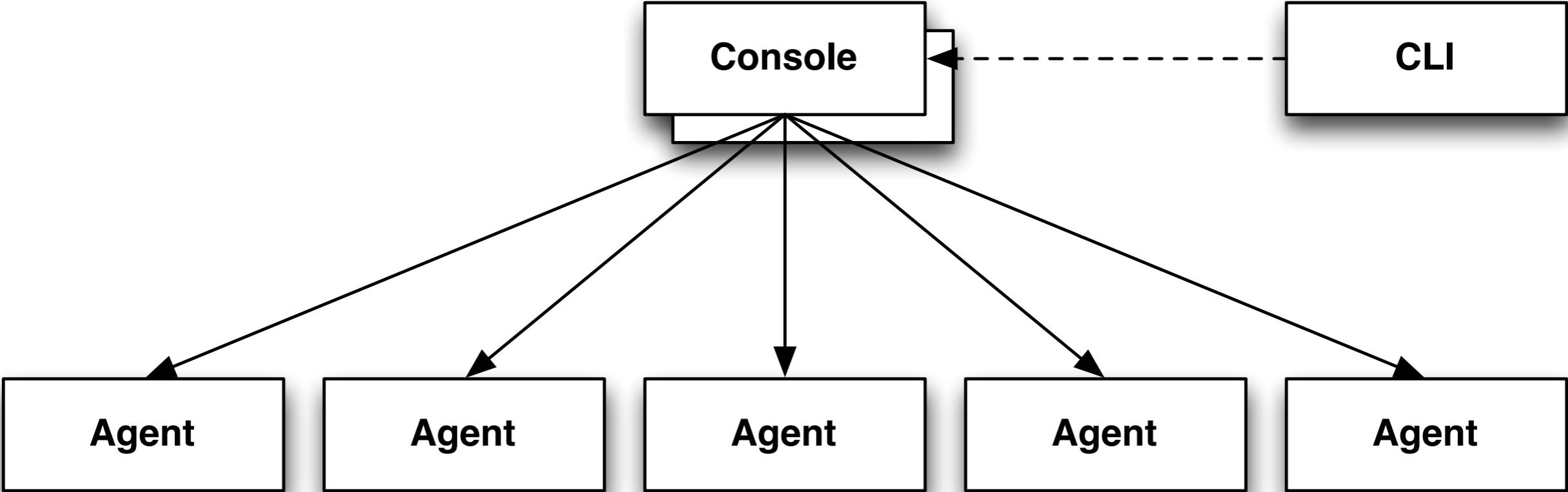


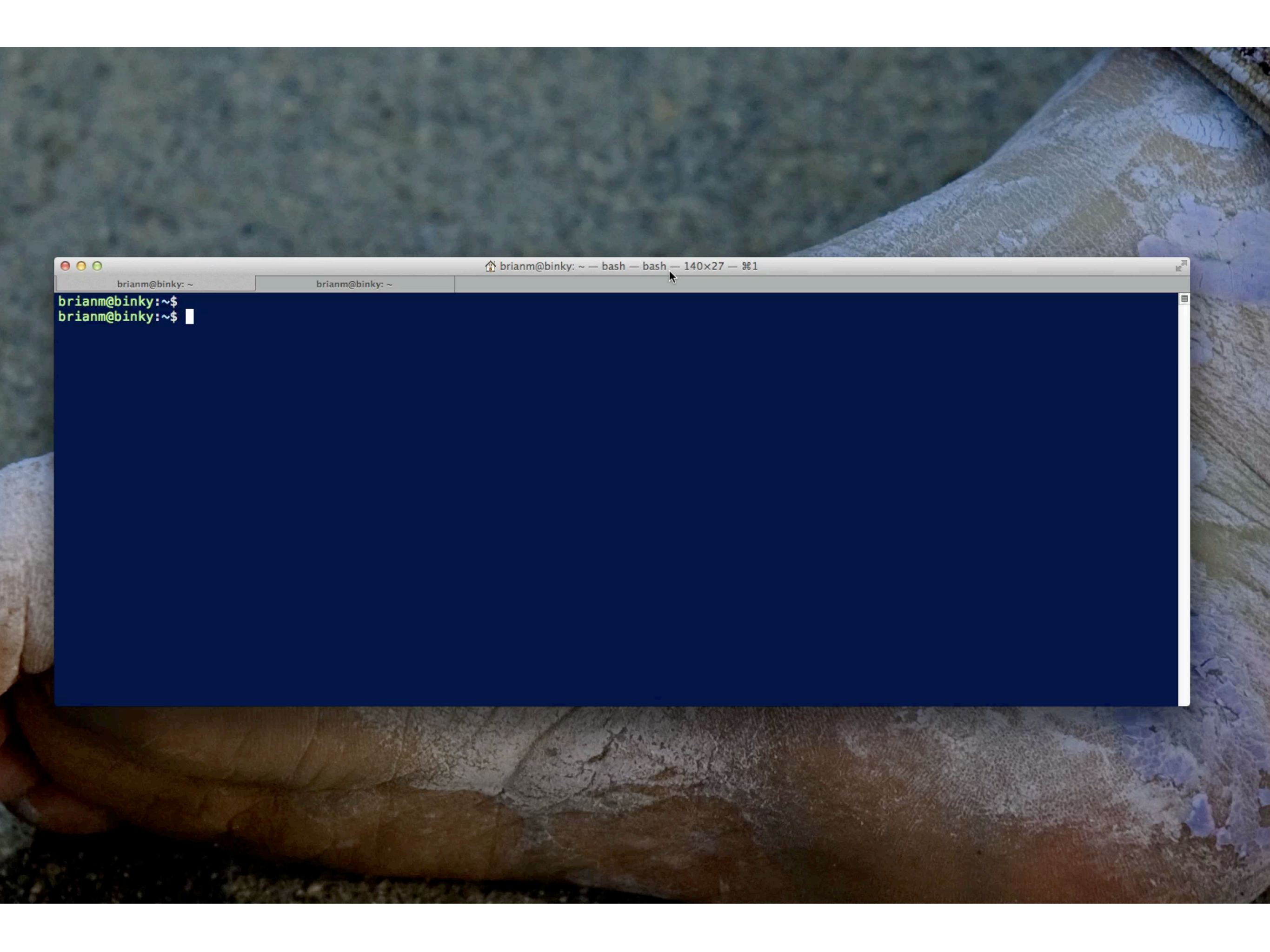
deployment root  
management api  
basic reporting



Agent managed as OS service, by  
operational automation (chef, puppet, etc)

# Provide Application Deployment through a Friendly Interface



A terminal window is overlaid on a blue background. The background features a hand holding a scroll with ancient text. The terminal window has a title bar with three colored buttons (red, yellow, green) on the left and a title text 'brianm@binky: ~ -- bash -- bash -- 140x27 -- %1' on the right. Below the title bar, there are two tabs, both labeled 'brianm@binky: ~'. The main area of the terminal is dark blue and contains two lines of text: 'brianm@binky:~\$' followed by a cursor, and 'brianm@binky:~\$' followed by a cursor.

```
brianm@binky: ~ -- bash -- bash -- 140x27 -- %1
brianm@binky: ~
brianm@binky:~$
brianm@binky:~$
```

```
$ sculptor agent deploy -a http://agent:25365/ \  
-n thinglet http://repo/frontend-0.0.3-x86_64.tar.gz
```

```
$ sculptor agent list -a http://agent:25365/  
0b75 thinglethttp://agent:25365/slot/0b75 stopped
```

```
$ sculptor slot start -a http://agent:25365/ 0b75
```

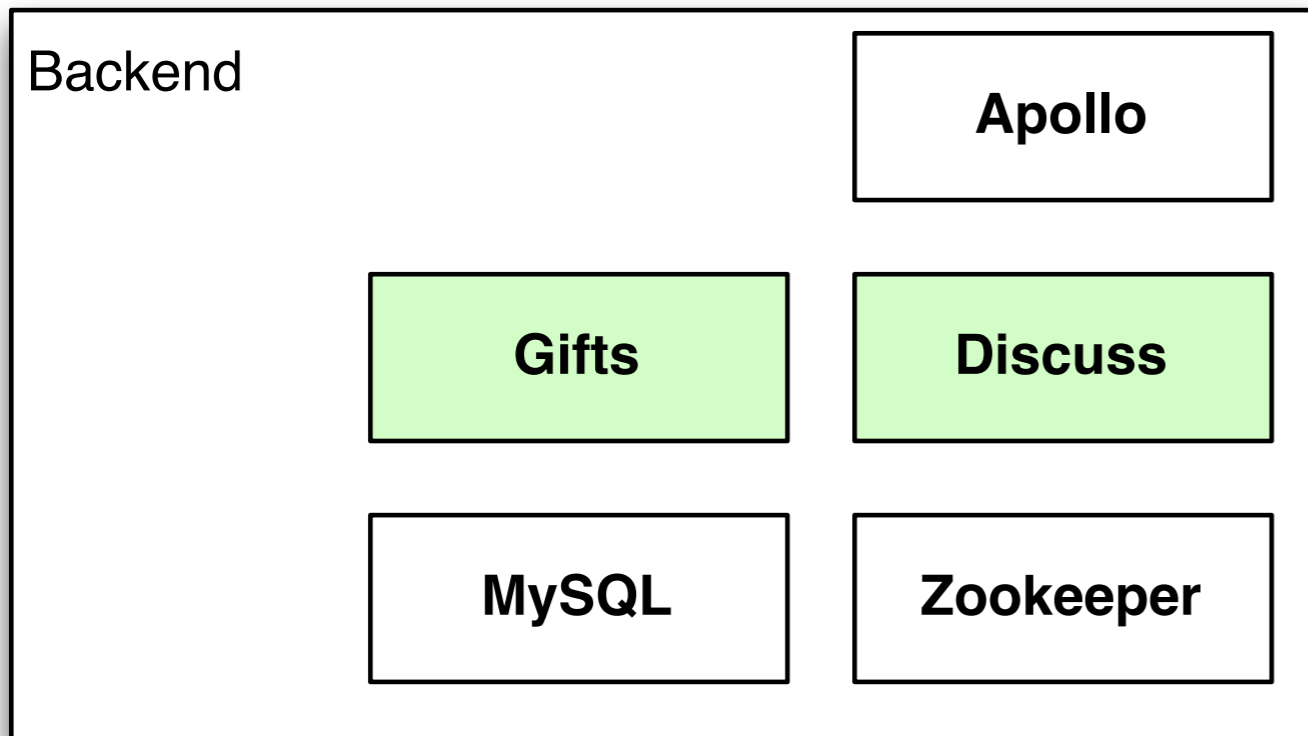
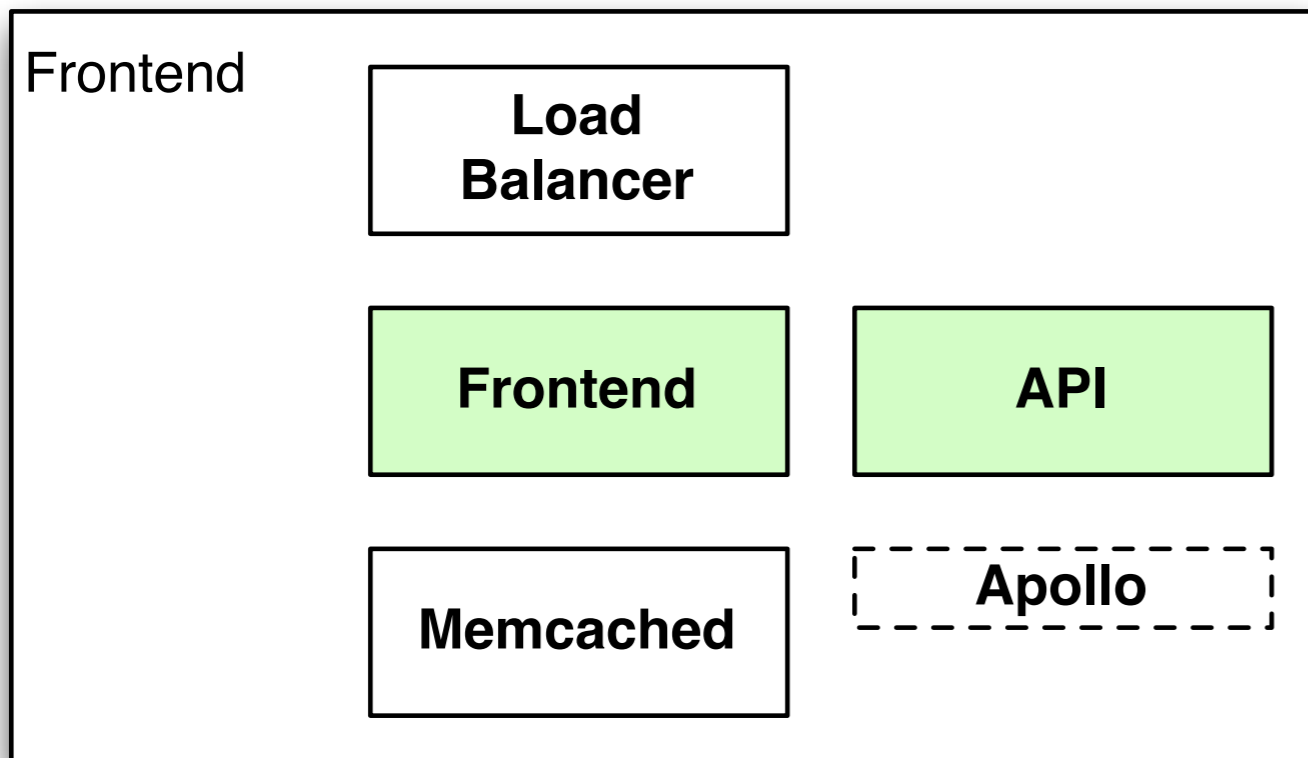
```
$ sculptor agent list -a http://agent:25365/  
0b75 thinglethttp://agent:25365/slot/0b75 running
```

```
$
```

Ops



**Back to Giftudi's Problems**



- API needs new behavior on Gifts.
- Frontend needs new Discuss.
- Gifts needs new sharding scheme
- Frontend needs new APIs on Gifts.

- API needs new behavior on Gifts.

Dev on API  
Dev on Gifts

- Frontend needs new Discuss.

Dev on Frontend  
Dev on Discuss

- Gifts needs new sharding scheme

Dev on Gifts  
Dev on API  
Dev on Frontend  
Dev on Apollo

- Frontend needs new behavior on Gifts.

Dev on Frontend  
Dev on Gifts

```
system "frontend" do
```

```
  server "front-lb"
```

```
  server "api-lb"
```

```
  server "frontend"
```

```
  server "api"
```

```
  server "memcached"
```

```
end
```

```
system "frontend" do
  server "front-lb", base: "load-balancer:front?from=80&to=8000"
  server "api-lb", base: "load-balancer:api?from=80&to=8000"
  server "frontend", base: "appserver",

  server "api", base: "appserver",

  server "memcached", base: "memcached",

end
```

```
system "frontend" do

  server "front-lb", base: "load-balancer:front?from=80&to=8000"
  server "api-lb",   base: "load-balancer:api?from=80&to=8000"

  server "frontend", base: "appserver",
            cardinality: 4,

  server "api", base: "appserver",
            cardinality: 4,
            install:

  server "memcached", base: "memcached",
            cardinality: 2,

end
```

```
system "frontend" do

  server "front-lb", base: "load-balancer:front?from=80&to=8000"
  server "api-lb",   base: "load-balancer:api?from=80&to=8000"

  server "frontend", base: "appserver",
    cardinality: 4,
    install: ["galaxy:frontend-0.0.2",
             "lb-add:front"]

  server "api", base: "appserver",
    cardinality: 4,
    install: ["galaxy:api-0.0.1",
             "lb-add:api"]

  server "memcached", base: "memcached",
    cardinality: 2,
    install: ["announce:/frontend/memcached"]

end
```

```
system "backend" do
  server "apollo", base: "apollo",
    cardinality: 2
    install: ["announce:/apollo/"]

  server "zookeeper", base: "zookeeper",
    cardinality: 5
    install: ["scratch:zk=@"]

  system "gift-cluster", cardinality: 2 do
    server "gifts", base: "appserver",
      cardinality: 2,
      install: ["galaxy:gifts-0.0.2"]

    server "mysql", base: "mysql",
      install: ["announce:/gclu/{parent.id}/"]
  end

  server "discuss", base: "appserver",
    cardinality: 2,
    install: ["galaxy:discuss-0.0.1"]
end
```



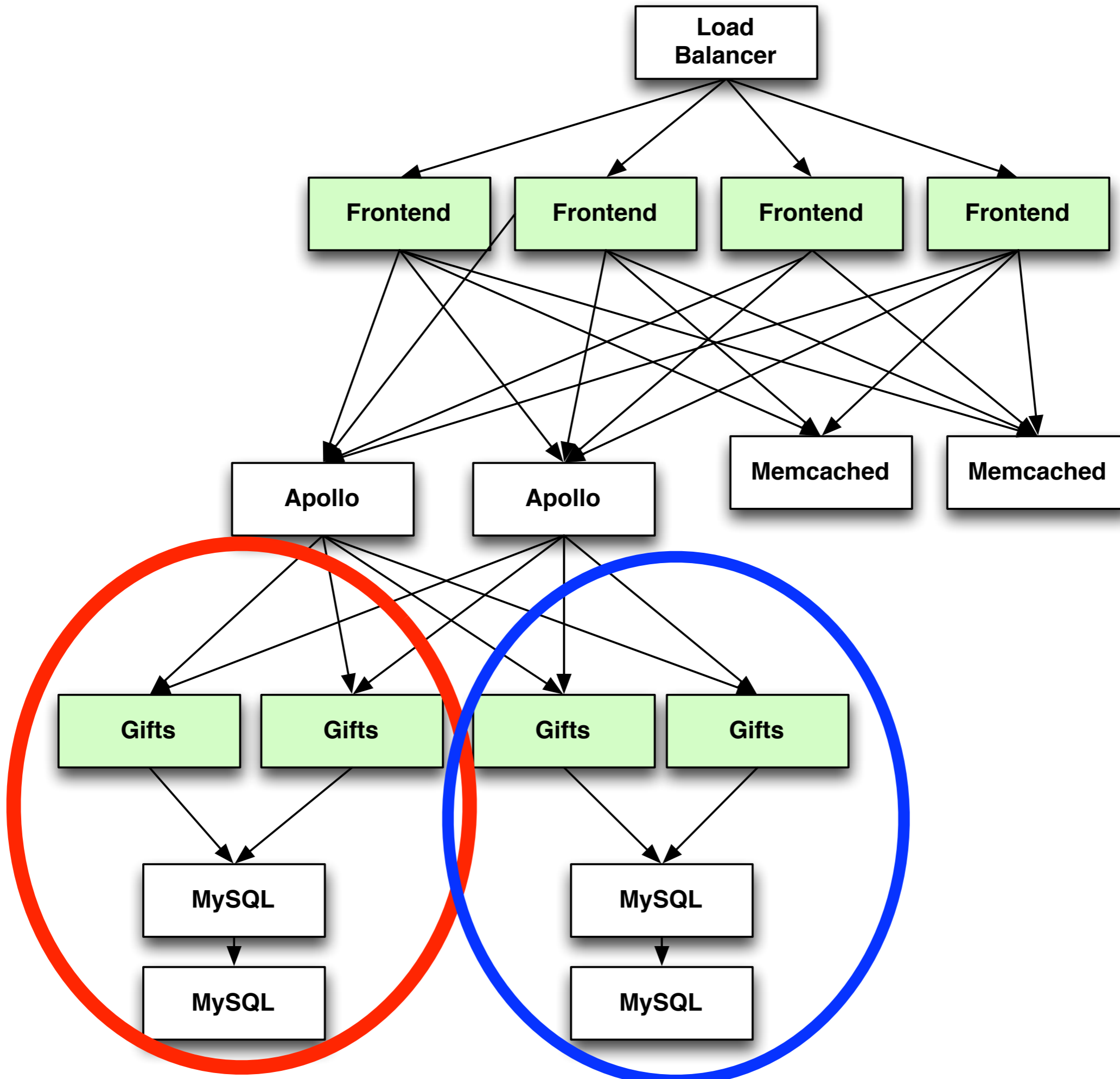
```
system "backend" do
  server "apollo", base: "apollo",
    cardinality: 2
    install: ["announce:/apollo/"]

  server "zookeeper", base: "zookeeper",
    cardinality: 5
    install: ["scratch:zk=@"]

  system "gift-cluster", cardinality: 2 do
    server "gifts", base: "appserver",
      cardinality: 2,
      install: ["galaxy:gifts-0.0.2"]

    server "mysql", base: "mysql",
      install: ["announce:/gclu/{parent.id}/"]
  end

  server "discuss", base: "appserver",
    cardinality: 2,
    install: ["galaxy:discuss-0.0.1"]
end
```



```
system "frontend" do

  server "front-lb", base: "load-balancer:front?from=80&to=8000"
  server "api-lb",   base: "load-balancer:api?from=80&to=8000"

  server "frontend", base: "appserver",
             cardinality: 4,
             install: ["galaxy:frontend-0.0.2",
                       "lb-add:front"]

  server "api", base: "appserver",
             cardinality: 4,
             install: ["galaxy:api-0.0.1",
                       "lb-add:api"]

  server "memcached", base: "memcached",
             cardinality: 2,
             install: ["announce:/frontend/memcached"]

end
```

```
environment "dev" do

  cardinality "/frontend.0/frontend" => 1,
             "/frontend.0/api"       => 1,
             "/frontend.0/memcached" => 1

  listener "ssh-keypairs", atlas: "default"

  provisioner "vmware", {
    vmrun: "/usr/local/bin/vmrun",
    ubuntu: "http://repo/ubuntu-12.04-atlas.tgz?user=atlas&pass=atlas"
  }

  base "ubuntu", provisioner: "vmware:ubuntu",
        init: ["apt:emacs23-nox"]

  base "appserver", inherit: "ubuntu",
        init: ["galaxy-agent"]

  ...
end
```

```
server "api", base: "appserver",  
             cardinality: 4,  
             install: ["galaxy:api-0.0.1",  
                      "lb-add:api"]
```

## System

---

```
provisioner "vmware", {  
  vmrun: "/usr/local/bin/vmrun",  
  ubuntu: "http://..."  
}
```

**Env**

```
base "ubuntu", provisioner: "vmware:ubuntu",  
      init: ["apt:emacs23-nox"]
```

```
base "appserver", inherit: "ubuntu",  
      init: ["sculptor-agent"]
```

```
server "api", base: "appserver",  
  cardinality: 4,  
  install: ["galaxy:api-0.0.1",  
           "lb-add:api"]
```

## System

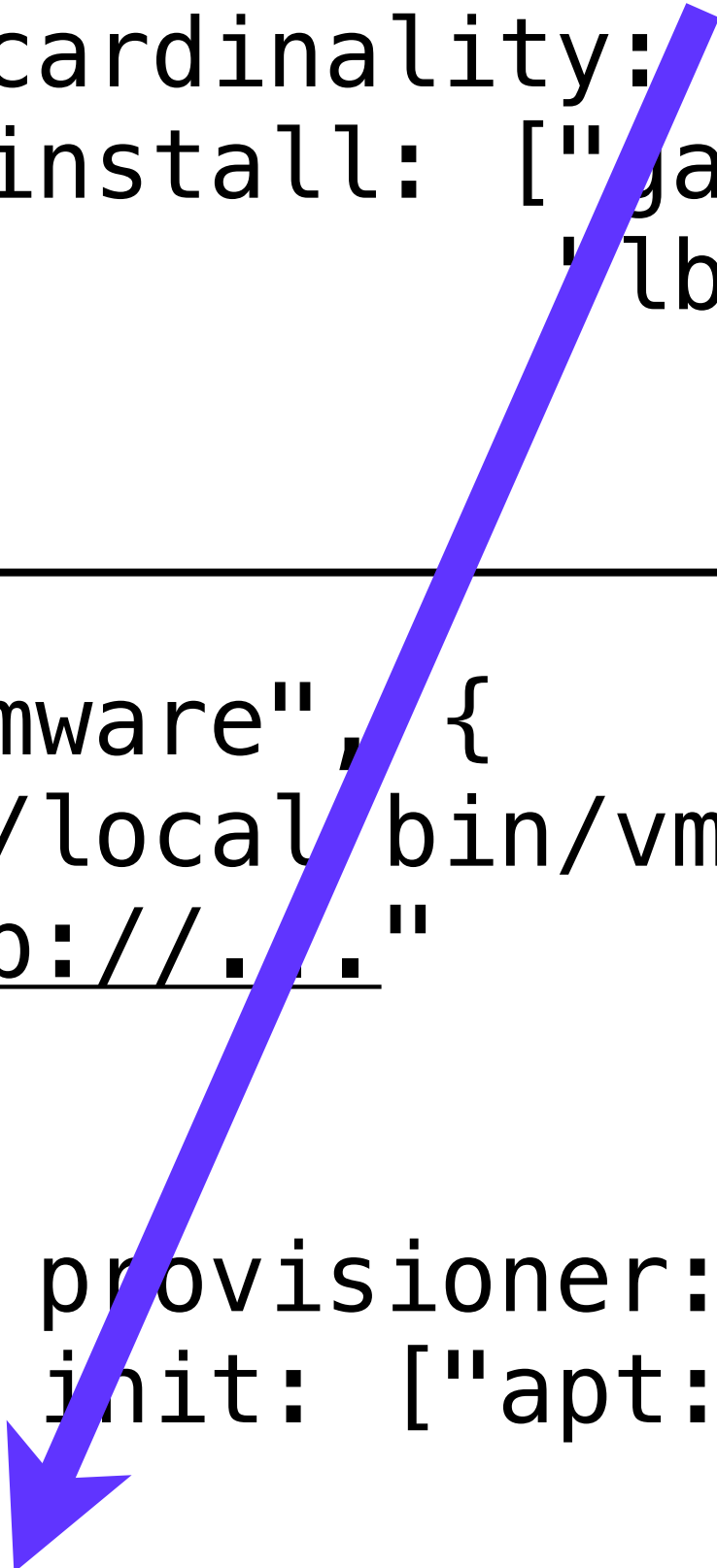
---

```
provisioner "vmware", {  
  vmrun: "/usr/local/bin/vmrun",  
  ubuntu: "http://. . ."  
}
```

Env

```
base "ubuntu", provisioner: "vmware:ubuntu",  
  init: ["apt:emacs23-nox"]
```

```
base "appserver", inherit: "ubuntu",  
  init: ["sculptor-agent"]
```



```
server "api", base: "appserver",  
             cardinality: 4,  
             install: ["galaxy:api-0.0.1",  
                      "lb-add:api"]
```

## System

---

```
provisioner "vmware", {  
  vmrun: "/usr/local/bin/vmrun",  
  ubuntu: "http://..."  
}
```

**Env**

```
base "ubuntu", provisioner: "vmware:ubuntu",  
      init: ["apt:emacs23-nox"]
```

```
base "appserver", inherit: "ubuntu",  
      init: ["sculptor-agent"]
```

```
base "java-server", {
  provisioner: "ec2:#{useast_small_32bit}",
  init:       ['chef:role[java_server]']
}
```

```
base "ruby-server", {
  provisioner: "ec2:#{useast_small_32bit}",
  init:       ['chef:role[ruby_server]']
}
```

```
base "oracle", {
  provisioner: ["rds", {
    storage_size: 10,
    instance_class: "db.m1.small",
    engine: "oracle-se1",
    username: "core",
    password: "core"
  }]
}
```



```
$ git clone git@repo/frontend-atlas.git  
$ cd frontend-atlas  
$ atlas converge
```

So we have a way to spin up **an** environment!

```
system "frontend",  
  external: "http://repo/frontend/prod/front.rb"
```

system "frontend",  
external: "<http://repo/frontend/prod/front.rb>"

system "api",  
external: "<http://repo/api/prod/api.rb>"

system "backend",  
external: "<http://repo/backend/prod/gifts.rb>"

system "data",  
external: "<http://repo/data/prod/rcmd.rb>"

```
system "giftudi"  
  system "frontend",  
    external: "http://repo/frontend/prod/front.rb"  
  
  system "api",  
    external: "http://repo/api/prod/api.rb"  
  
  system "backend",  
    external: "http://repo/backend/prod/gifts.rb"  
  
  system "data",  
    external: "http://repo/data/prod/rcmd.rb"  
  
end
```

[http://git/activity.git/blob\\_plain/prod:/model/activity.rb](http://git/activity.git/blob_plain/prod:/model/activity.rb)

[http://git/activity.git/blob\\_plain/reshard:/model/activity.rb](http://git/activity.git/blob_plain/reshard:/model/activity.rb)

```
$ atlas -e ec2 converge
```

<http://github.com/ning/atlas>

<http://github.com/ning/galaxy>

<http://github.com/pierre/galaxy>

<http://github.com/brianm/sculptor>

<http://github.com/NessComputing/galaxy>

<http://github.com/dain/galaxy-server>

<http://github.com/giftuddi>